

Town of Christiana

ITEMS TO BE RECYCLED

Have your garbage and recycling out to the curb by 6:00am.

NEWSPAPERS, MAGAZINES, OFFICE PAPER

Glossy inserts, catalogs, mail circulars, phone books, paperback books, cereal boxes, envelopes, wrapping paper etc.

CARDBOARD (FLATTENED)

Clean cardboard only. Must be broken down and flattened.

GLASS (CLEAR-BROWN-GREEN)

All bottles and jars must be rinsed out. No window glass, light bulbs, TV tubes, drinking glass, etc.

ALUMINUM

Aluminum beverage cans only. No aluminum foil, TV dinner trays, etc.


TIN & BI-METAL CANS

Soup, Vegetable, Juice cans, etc. All cans must be rinsed out completely.

PLASTIC CONTAINERS

This includes plastic bottles with threaded caps, the recycling symbol 1 thru 5 and 7. All plastic bottles must be rinsed out completely. No deli or butter containers.

Accepting TYPE 1 through TYPE 5 and TYPE 7.

Look for the  coding on the bottom of the bottle.

WASTE OIL

Common engine oil only. Must be in leak-proof, non breakable containers. Limit 2 one-gallon with lid, per week.

LEAD ACID VEHICLE BATTERIES

Car and truck batteries only. Battery casings must be unbroken. These are set next to the recycling cart.

TIRES

Car tires off the rim will be taken, two(2) per week per unit, up to eight (8) a year.

Place your recyclables in the special recycling containers provided. These containers are to be left with the residence if you move. Waste oil, tires, and batteries should be placed along side your recycling bin not inside. Please keep your recyclables separate from your other garbage and easily accessible. DNR is enforcing stronger recycling laws in the state of Wisconsin.

The trash service will still be weekly and recycling every other week.

Please call our office at 1-800-248-2373 to make arrangements for pick up of large items, appliances or electronic waste. As of September 1, 2010 electronic waste is no longer accepted at the landfill.



NO MEDICAL WASTE – i.e. Needles, rubber gloves, oxygen tubes, IV bags, etc.

NO YARD WASTE - It is illegal to landfill these items.

NO WET PAINT or HAZARDOUS MATERIALS - Please contact your County Courthouse regarding disposal of these items

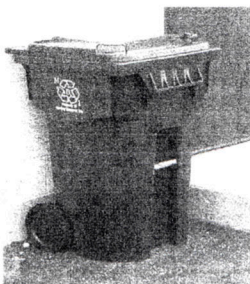
EMPTY or DRY PAINT CANS - These items may be set next to your trash with the lids removed.

HOLIDAY SCHEDULE

There will be NO garbage pick up on the following days:

Thanksgiving Day * Christmas Day * New Year's Day * Memorial Day * July 4th * Labor Day

Collections will be one day later (working on Saturdays) when the holiday falls during the week.



Veolia Environmental Services
and the **Town of Christiana**
Thank you for recycling!

